

HORIZON

---

OFFICE PARK - BUILDING 10







## HORIZON

OFFICE PARK • BUILDING 10

Horizon10 is located in the Horizon Park office park. The building has beautiful open office spaces with lots of natural light. The office spaces are finished with an eye for quality.

The park is extremely well located due to its location close to the Brussels Ring and the E40. There is a bus stop nearby with a smooth connection to Brussels North and Leuven as well as to Zaventem airport.

### address

Leuvensesteenweg 510  
1930 Zaventem

### total surface

1.665 sqm

### area for rent

1st floor: 130 - 770 sqm

### parking rate

1/100





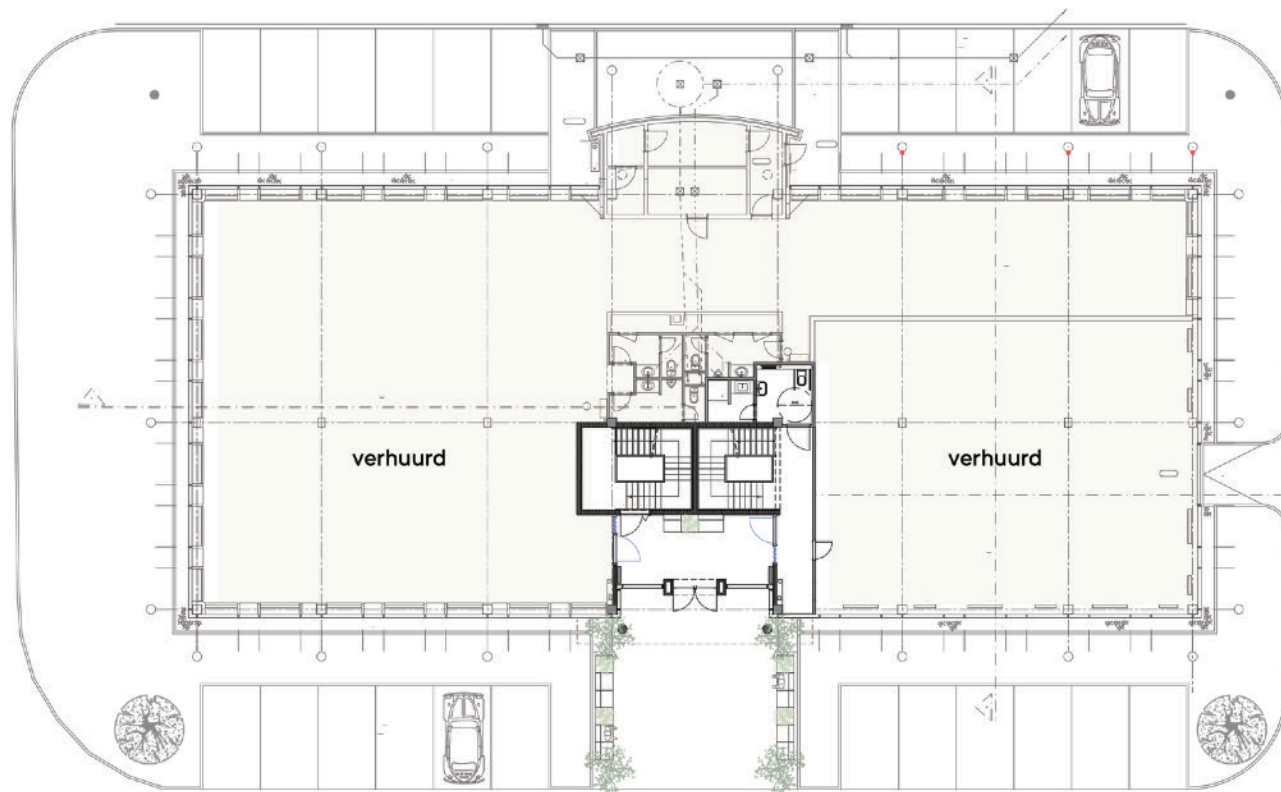










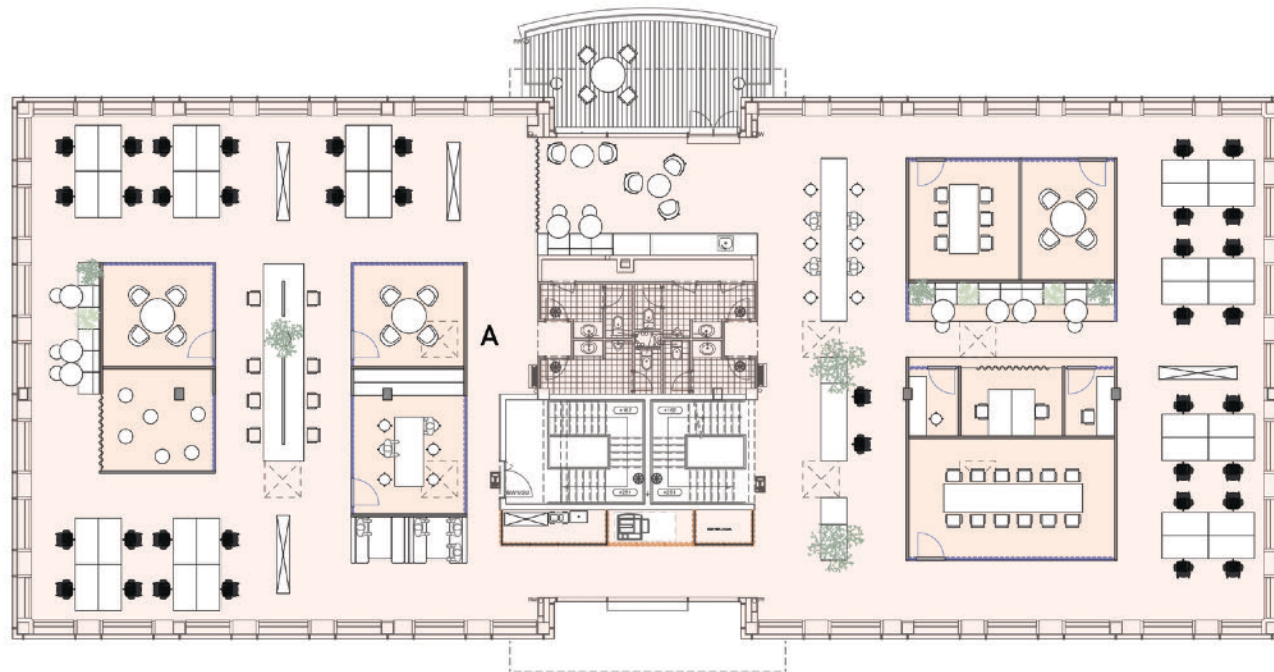


### Ground Floor

Shared facilities 100 sqm

- lobby
- miva toilet
- shower room

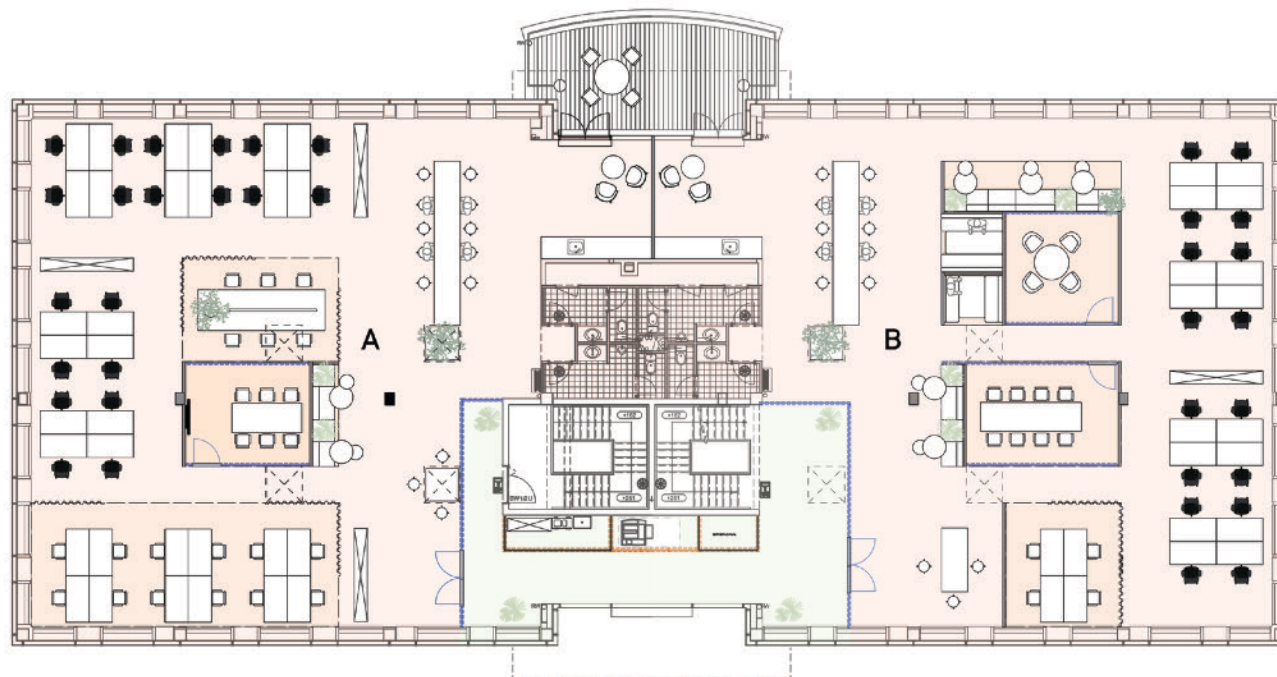




### First Floor - 1 tenant

A - 770 sqm  
+ 25 sqm terrace

- Front desk
- Pantry / lunch room / cozy corner
- Sanitary
- 40p | Workstations
- 19p | Landing spots
- 6p | 6x Meeting room
- 12p | Project room
- Printer + storage + maintenance room
- Server room
- Stair lift



## First Floor - 2 tenants

A - 350 sqm

- Front desk
- Pantry / lunch room / cozy corner
- 32p | Workstations
- 8p | Landing spots
- 6p | 1x Meeting room
- Sanitary

B- 350 sqm

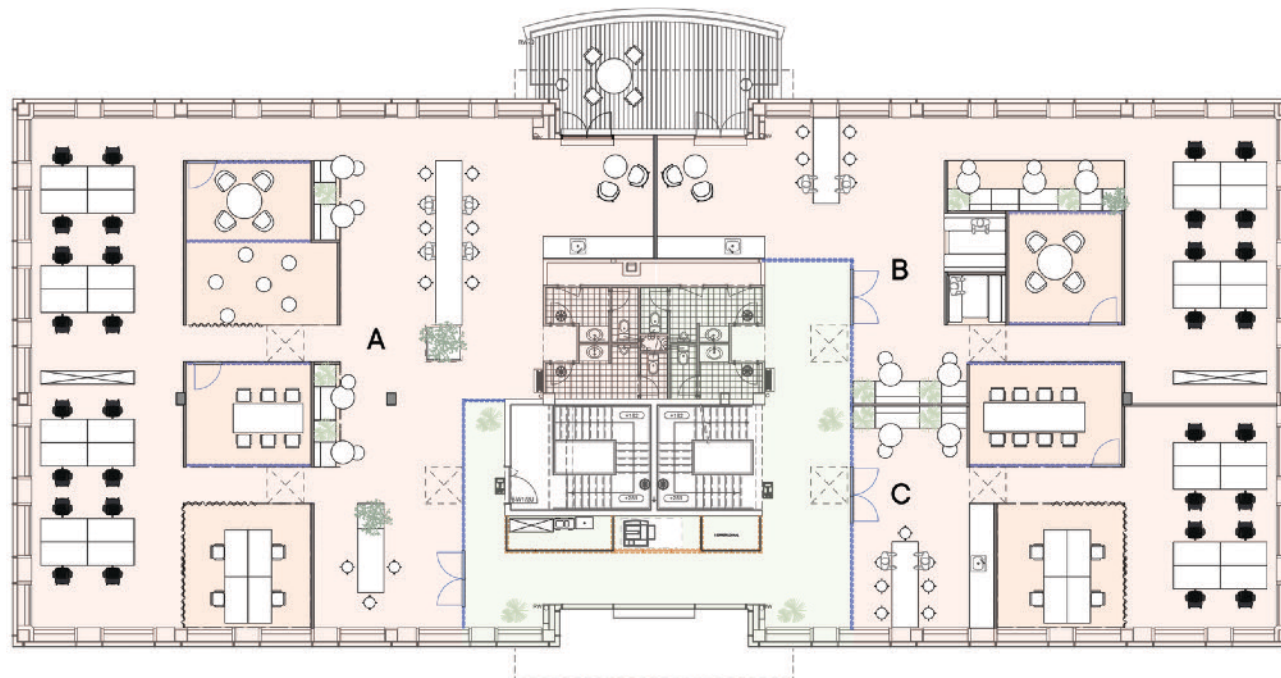
- Front desk
- Pantry / lunch room / cozy corner
- 20p | Workstations
- 8p | Landing spots
- 8p + 4p | 2x Meeting room
- Sanitary

shared facilities 70 sqm

shared terrace 25 sqm

- Printer + storage
- Maintenance room
- Server room if desired
- Stair lift





### First Floor - 3 tenants

A - 350 sqm

- Front desk
- Pantry / lunch room / cozy corner
- 32p | Workstations
- 8p | Landing spots
- 6p | 1x Meeting room
- Sanitary

B - 190 sqm

- Barception / pantry
- 8p | Workstations
- 7p | Landing spots
- 6p | 1x Meeting room
- Sanitary

C - 130 sqm

- Reception / pantry
- 8p | Workstations
- 7p | Landing spots
- 6p | 1x Meeting room

shared facilities 100 sqm

shared terrace 25 sqm

- Sanitary
- Printer + storage
- Maintenance room
- Server room if desired
- Stair lift



# KEY ESTATE

your partner in business locations

Dhr. Dick Dekeyzer  
M: +32 495 29 12 80  
E: [dick.dekeyzer@keyestate.be](mailto:dick.dekeyzer@keyestate.be)

[www.keyestate.be](http://www.keyestate.be)

Noordkustlaan 16C  
1702 Groot-Bijgaarden  
T: +32 2 420 03 03  
E: [info@keyestate.be](mailto:info@keyestate.be)